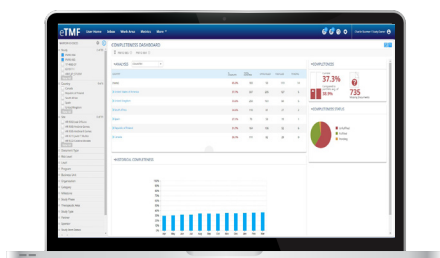


IQVIA eTMF

Helps plan, manage, monitor and maintain an inspection-ready eTMF. Keep your study on track and compliant — always.

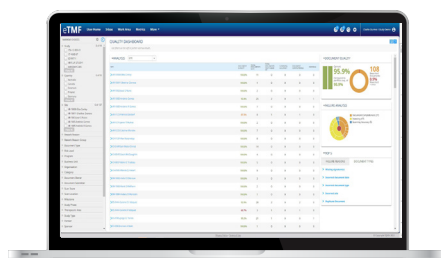
How is it different?

Our “Quality by Design” approach promotes realtime eTMF compliance. Dashboards, metrics and KPIs offer instant insight into your eTMF health and guide you through addressing any issues to improve process efficiencies. Our KPI metrics of Completeness, Quality, and Timeliness help you proactively identify and correct problems and accurately measure results to improve productivity and expedite timelines.



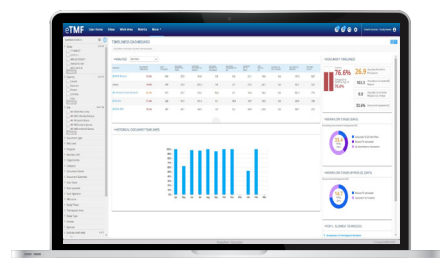
Completeness

Quickly identify missing and overdue documents based on what should be in your TMF at this point in the trial and take action.



Quality

Understand why documents are failing QC and how often they must be resubmitted and corrected.



Timeliness

Measure whether documents are being promptly filed and finalized in eTMF once received.

Complete

- Track all the evidence needed for your studies
- Know what documents are in and which are missing

Consistent

- Integrate with your CTMS
- Incorporate the eTMF Master File List
- Generate a consistent set of artifact every time

Compliant

- Ensure regulatory compliance
- Maintain inspection readiness
- Avoid warning letters and fines



Always be inspection-ready

The IQVIA eTMF provides simple, intuitive, dashboards that deliver at-a-glance status overviews for each role. Users can easily understand what is missing and take immediate action.



Easy to use

Our easy navigation features minimize training and improve end-to-end productivity.

- Role-based dashboards
- At-a-glance status overviews
- Intuitive navigation
- Minimal training necessary



Quick to implement

Our accelerator package, made available at no cost, help our clients with a quick path to victory, allowing full integration with your system and processes. This package includes:

- Operational SOPs
- Training modules
- Validation package
- Risk assessment tools



Adapt to your needs

Buid in study setup wizards provide planning tools to help enhance workflow and configure your eTMF to meer the specific demands of your study.

- Configurable for your requirements
- Adjustable based on your risk tolerance
- Each TMF planned based on your study-specific requirements

The IQVIA eTMF is an intelligent, innovative, and integrated TMF solution and part of IQVIA Orchestrated Clinical Trial Suite. Please contact us to learn more about how we can help you efficiently manage all of your clinical studies.