

Casemix360 – a flexible DRG system

Casemix360 helps create tomorrow's healthcare today

The healthcare sector uses a Diagnosis-Related Group (DRG) system to categorize hospitalization costs and determine how much to pay for a patient's hospital stay. The DRG system is a way of handling increasing productivity with limited resources without neglecting the quality of service.

The DRG system classifies patients into clinically meaningful and resource homogeneous groups. The DRG system is thus used to group inpatients and outpatients being treated at a hospital according to diagnosis, treatment, age, gender and discharge status – the casemix. Each DRG group

is accompanied by an average cost of production corresponding to the DRG rate.

Casemix360 offers an end-to-end infrastructure to maintain, develop and improve the patient classification and pricing infrastructure.

The system helps you facilitate a modern healthcare sector and introduce agility for both payers, providers and healthcare authorities. We especially support the intentions with economic governance of the hospitals concerning cost control, cost-effectiveness, performance and quality of treatment.

Casemix360 consists of four elements:

CASEMIXMANAGER

The CasemixEditor is the main part of the system. This application will help you maintain and develop the Casemix logic, and to publish the results in a grouper and visual decision tree.

CASEMIXVIEWER

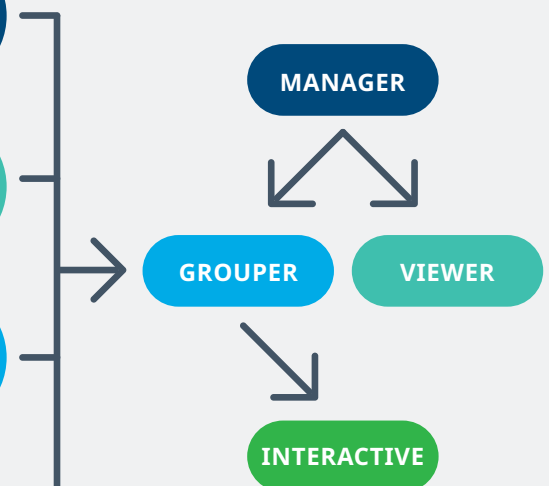
The CasemixViewer is a website that gives a standard user full information about the casemix system with the possibility to make specific lookups and view how different classifications influence the grouping.

CASEMIXGROUPE

The CasemixGrouper is a fast offline grouper that gives the technical user a way to group a large amount of records either for testing or in a production workflow.

CASEMIXINTERACTIVE

The CasemixInteractive is a website that gives a standard user the precise information about where specific classification codes end up in the relevant casemix system. The website guides the user through setting up an input string to the grouper and presents the results of the grouping process with links to the visual presentation.



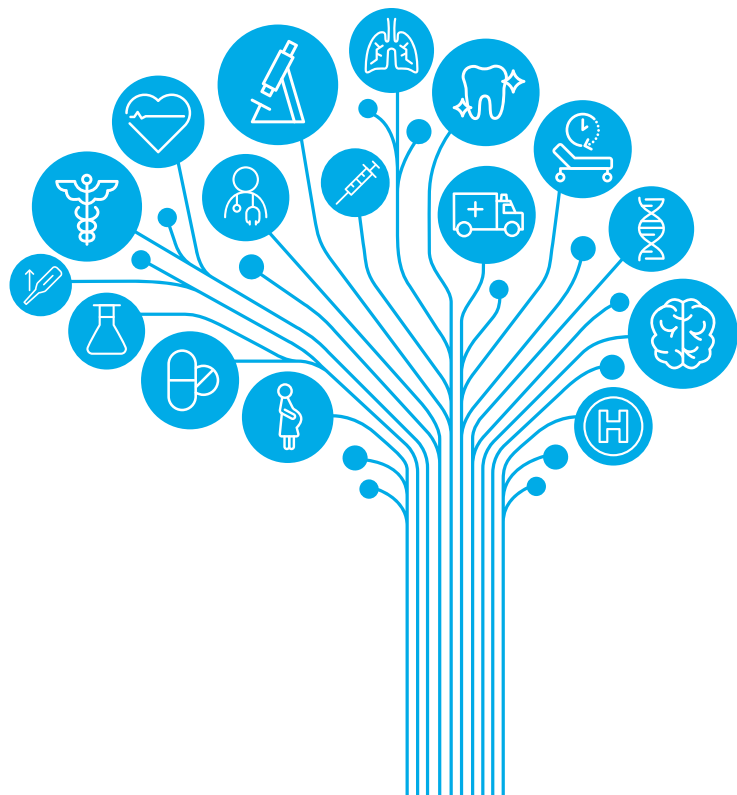
Casemix360 is a tool that makes it easy to interact with the grouping logic and allows changes to the system without having to write programming code. Furthermore, it is possible to publish a web grouper, standalone grouper and casemix documentation, where many manual processes prior to this tool

were involved. Thus, it is a combined set of collaboration services used for managing users, workflow and viewing grouping logic in visual formats. This means that you can centralize or decentralize the maintenance of the logic.

In other words, the **Casemix360** tool allows the user to update the casemix logic without needing a highly technological background.

Casemix360 in short:

- Provides the opportunity to maintain and develop all aspects of the casemix system and to produce all the material for publishing documentation or grouper (offline and web)
- Supports multiuser environment – **Casemix360** can be used by different users in and outside your organization
- Users can do all the maintenance of the **Casemix360** system in an easy and safe way
- The grouper is made instantly from the definitions in the database, and differences between versions are logged in real time for better documentation of the development of the casemix logic



Collaboration

The development of **Casemix360** is done in a continuous collaboration between IQVIA and The Danish Health Data Authority under The Danish Ministry of Health.

During the past 11 years, The Danish Health Data Authority and IQVIA have joined their competencies to develop the CasemixEditor. The employees from The Danish Health Data Authority have an in depth understanding of how to create and maintain a DRG-logic. With the combination of the technical skills of the employees from IQVIA the unique tool the CasemixEditor has been developed.



**SUNDHEDSDATA-
STYRELSEN**

Want to know more?

The **Casemix360** system comes with pre-defined grouping logic for the Nordic and Baltic countries but can be customized to any other casemix systems. The **Casemix360** system is continuously being implemented in additional countries and hospitals, which results in an ongoing configuring of the system.

If you are interested in hearing much more about **Casemix360**, please do not hesitate to contact sales director Majlis Mølenberg.

CONTACT US

Majlis Mølenberg

Sales Director, IQVIA Denmark

Majlis.molenberg@iqvia.com | +45 2099 5258

iqvia.com/contactus